

# How to Pair Devices

## with the VitalCare App

**1** Turn on the power to your tablet and then login to your WiFi network.



**2** Turn ON the power to the device you wish to pair (a blood pressure cuff, for example)

**3** On your smart phone or tablet, go to the VitalCare app.

**4** In the VitalCare app, press on the blue "MORE" box to be taken to a second page.

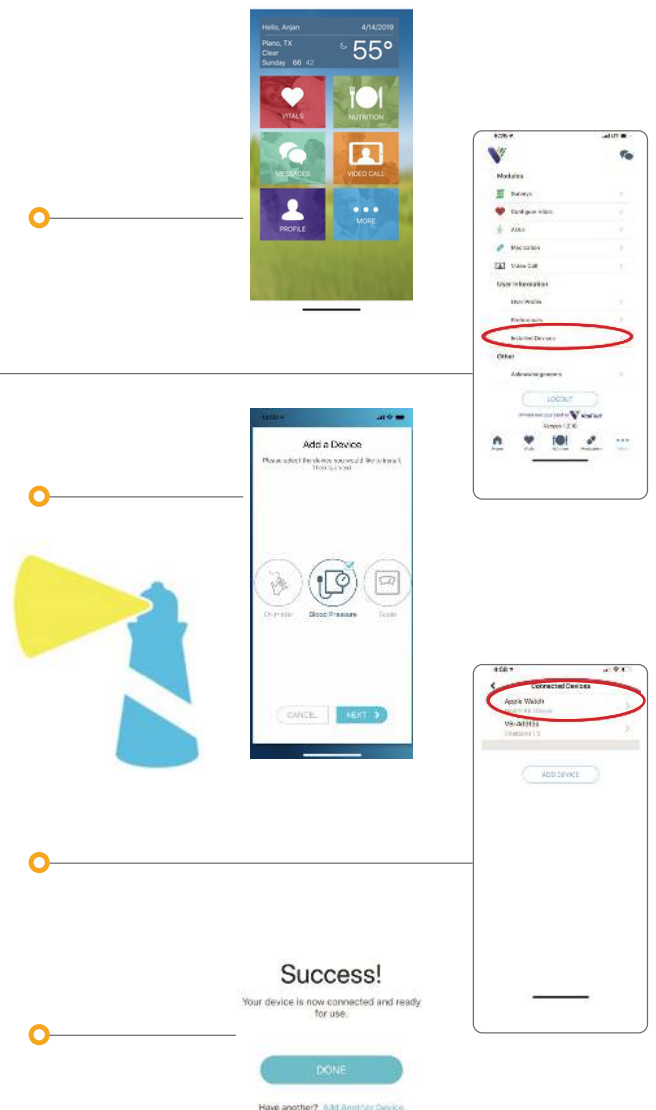
**5** Scroll down to "Installed Devices" and press on that once.

**6** The next screen will say "Add a Device". Roll your finger over the options, then press on the type of device you want to add. Then press NEXT.

**7** You will see a yellow and blue lighthouse animation, which tells you that your phone or tablet is scanning for a device to pair with.

**8** Now, you will see a list of found devices. The device you wish to add should appear on the list. Press on it and then press NEXT.

**9** The screen will say SUCCESS, indicating you have successfully paired your device.



If you have questions about pairing your device, please call Customer Care at (800) 441-0230 (Mon - Fri, 9:00 - 5:00 Eastern).

